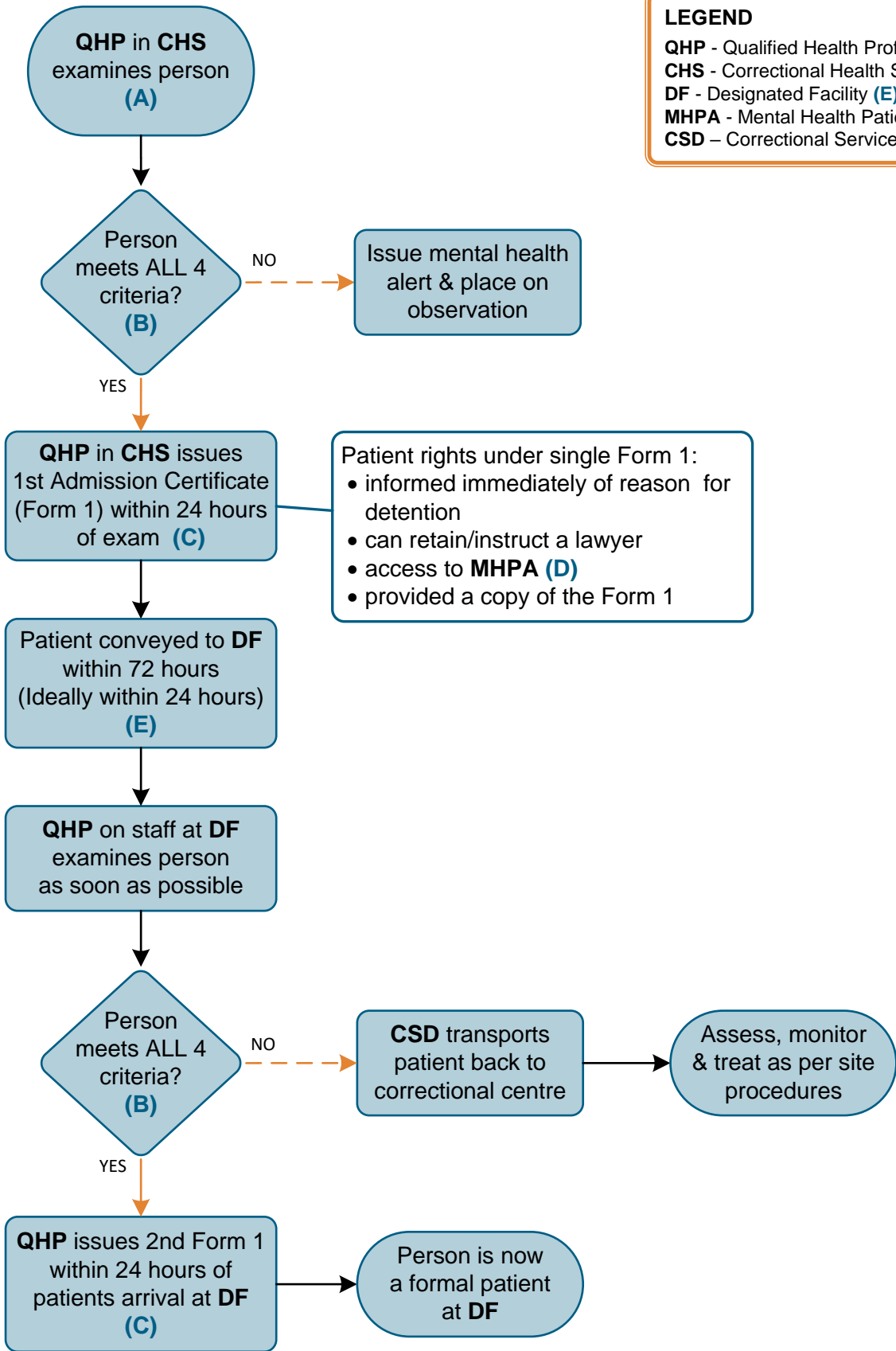


See Key Points for Reference Details A-E (over)

**LEGEND**

**QHP** - Qualified Health Professional (A)  
**CHS** - Correctional Health Services  
**DF** - Designated Facility (E)  
**MHPA** - Mental Health Patient Advocate (D)  
**CSD** - Correctional Service Division



## Definition of Mental Disorder

(MHA s.1(1)(g))

A substantial disorder of thought, mood, perception, orientation, or memory that grossly impairs: judgment, behavior, capacity to recognize reality or ability to meet the ordinary demands of life, but does not include a disorder in which the resulting impairment is persistent and is caused solely by an acquired or congenital irreversible brain injury.

### A. Qualified Health Provider (QHP) examination (MHA s.2)

A **QHP** under the MHA is a nurse practitioner, physician or psychiatrist. Meeting the Form 1 admission criteria can be based on the **QHP's** observations and information from others.

### B. Formal Patient Admission Criteria (MHA s.2)

- Suffering from a mental disorder
- Potential to benefit from treatment for the mental disorder
- Within a reasonable time, likely to cause harm to others or to suffer substantial mental or physical deterioration or serious physical impairment, related to the mental disorder
- Unsuited for admission to a **DF** other than as a formal patient

## C. Form 1 Admission Certificate (MHA s.4/7)

After a **QHP** examines a patient, the provider has up to 24 hours to issue a Form 1 Admission Certificate. A Form 1 gives the authority to care for, observe, examine, assess, treat, detain & control the person.

### Effect of One Admission Certificate

- Apprehend (if required) & convey person to a **DF** (if not there already) within 72 hours of issuance.
- Valid up to 24 hours from person's arrival at a **DF** if conveyed under authority of MHA, or from issuance of first Form 1 if presented voluntarily and does not require conveyance.

### Effect of Two Admission Certificates

Valid up to 1 month from date of second admission certificate.

## D. Mental Health Patient Advocate (MHPA)

A person with one admission certificate, a formal patient, or someone on their behalf, may contact the **MHPA**. Staff caring for a formal patient can also consult the **MHPA** for questions or advice.

Toll free AB: 310-0000  
then dial: 780-422-1812

Email:  
[info@albertahealthadvocates.ca](mailto:info@albertahealthadvocates.ca)

## E. Designated Facility (DF)

Place (or part of a place) appointed in the *MHA Forms and Designated Regulation*. Not all hospitals in Alberta are **DFs**. A **DF** is the **ONLY** place that can admit a formal patient under the MHA.

[MHA of Alberta Designated Facilities Map](#)

### Additional Resources

[Guide to Alberta's Mental Health Act](#)

[Formal Patient Flowchart](#)

[MHA FAQ Correctional Health Services](#)

[Mental Health Act Forms \(GoA\)](#)

## Additional Information

In addition to the prescribed MHA forms referenced, all providers are expected to follow professional standards and organizational guidelines for documentation.

Terms used in this document are specific to the MHA. For definitions, see MHA s.1.

Form #	Form Name	Completed by	NOTES:
1	Admission Certificate	<b>QHP</b>	For a person to become a formal patient at a <b>DF</b> , 2 <b>QHPs</b> (at least 1 physician & 1 staff member at facility) perform separate exams, each issuing a Form 1.

This resource was created by the Mental Health Act Team. For more information: [MHA Information for Health Professionals](#)  
For enquiries about this resource, contact: [MHAandCTO.Enquiries@ahs.ca](mailto:MHAandCTO.Enquiries@ahs.ca)