

Spontaneous Awakening Trial (SAT) Decision Tool

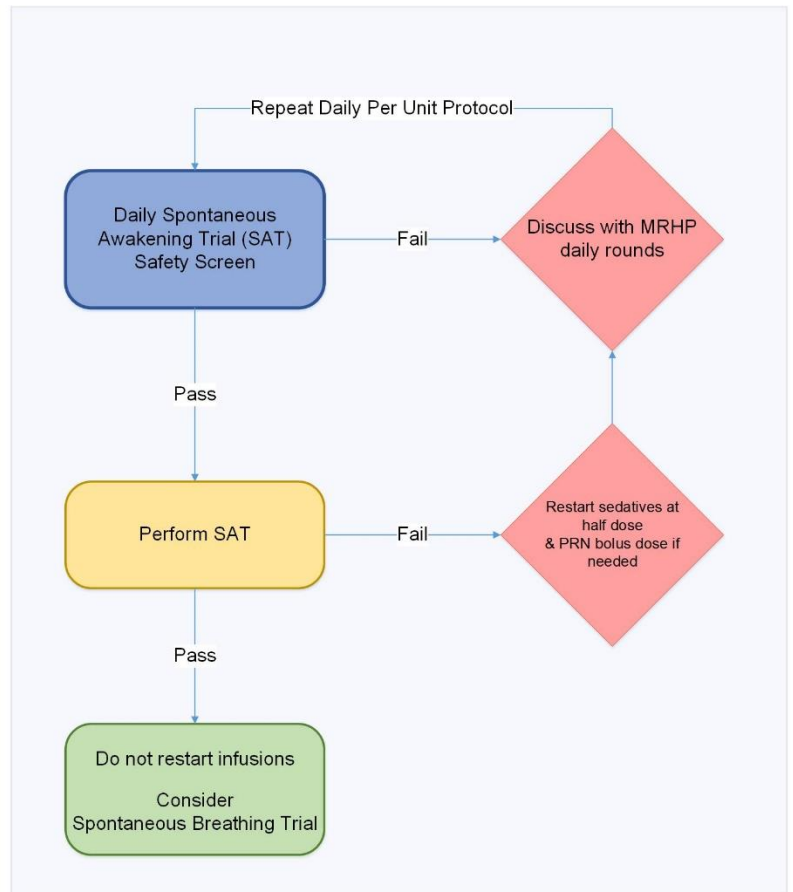
Reducing the use Of Sedation & Analgesic infusions (ROSA)

Safety Screen: SAT Exclusion Criteria

- MRHP order to not complete SAT
- Ordered RASS goal of ≤ -3
- Current RASS $> +1$
- Active neuromuscular blockade
- Active seizures
- Active treatment for elevated ICP
- Less than 24 hours post cardiac arrest
- Severe respiratory or cardiovascular instability

SAT Process

1. Bedside RN, in collaboration with RRT to determine eligibility & time
2. Ensure patient has visual and auditory aids
3. Holds all sedative and analgesic infusions (except dexmedetomidine). Only continue analgesia needed for active pain or chronic opioid use
4. RN to remain at bedside to monitor GCS, RASS & vital signs



SAT Pass

- RASS -1 to +1
- Cooperative
- Follow simple commands
- Vital signs stable

SAT Fail

- RASS $> +1$
- Ventilator dysynchrony
- Respiratory distress
- Acute cardiac arrhythmias
- Hemodynamic instability